

THE HOTEL

This mountain home is a convivial refuge, bubbling with positive energy.

Watched over by the peaks of the Swiss canton of Valais including the Matterhorn, this high-altitude setting both inspires and enralls. The open spaces encourage exchanges and fluidity. Small informal lounges for getting together at any time, an enormous “show kitchen” with a view of the chef and his crew at work around an exclusive menu, leather-bound books in all corners of the hotel.

FACTS & FIGURES

CATEGORY

4-star Superior, Member of Small Luxury Hotels of the World and Michel Reybier Hospitality

ROOMS

95 rooms of which 24 are suites

HOTEL MANAGER · Yann Favre

RESERVATION MANAGER · Andreia Pinto
 reservation@schweizerhofzermatt.ch

CONCIERGE · Concierge Team
 concierge@schweizerhofzermatt.ch

DIRECTOR OF SALES · Petra Ellmeier
 sales-zermatt@michelreybier.com

LOCATION



The Schweizerhof Zermatt is at the best location in the center of the car free village of Zermatt and only 5 minutes away from the train station. The cable cars to the skiing area are reached within walking distance. In front of the hotel, on the Bahnhofstrasse you find sport and souvenir shops as well as international labels and brands.

ROOMS & SUITES

The majority of all rooms have a balcony and offer views of the surrounding mountains and village, some to the Matterhorn.

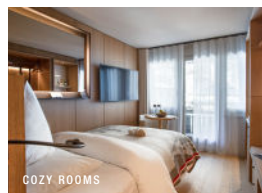
All guest rooms are non-smoking. The rooms are equipped with a safe, TV with Screen Mirroring, phone, multifunctional iPad, Nespresso coffee machine, minibar, Dyson hairdryer and wireless Marshall audio system. Use of Wifi and transfer within Zermatt upon arrival and departure with the electric car are included.

Packages and promotions are available.

OPENING PERIOD

Winter season: mid December to mid April

Summer season: beginning of May to beginning of November



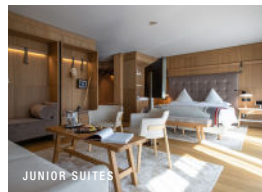
COZY ROOMS

- 19 Cozy rooms:
17m² / 204 sqft for 1 person



DOUBLE ROOMS

- 30 Double rooms and 22 Double rooms with Matterhorn view from the balcony:
26-28m² / 279 – 301 sqft for up to 2 persons plus 1 cot



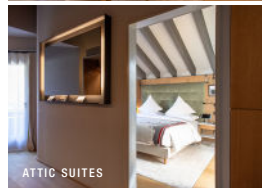
JUNIOR SUITES

- 7 Junior Suites:
30-38m² / 322 – 409 sqft for up to 4 persons
- 8 Junior suites with Matterhorn view:
40-49m² / 430 – 527sqft for up to 4 persons



FAMILY SUITES

- 6 Family suites:
44-49m² / 473-527 sqft for up to 4 persons



ATTIC SUITES

- 3 Attic suites:
50m² / 538 sqft for up to 4 persons

RESTAURANTS & BAR

At Schweizerhof Zermatt adventure is savored in a laid-back yet captivating atmosphere: The Schweizerhof Kitchen takes center stage with its show kitchen serving dishes from the XXL BBQ Grill and a stone oven. La Muña (only open in winter) tickles the taste buds with ultra-fresh Japanese-Peruvian fusion cuisine, while Cheese Factory is all about Swiss cheese specialties. The Myoko brings authentic Japanese cuisine from the Land of the Rising Sun straight to Zermatt. Delicious drinks and cocktails can be enjoyed at the Bar while cigars, fine wines and spirits delight at Le Fumoir. During the summer months the Schweizerhof lifestyle is enjoyed on the Schweizerhof terrace with BBQ and tasty drinks from the Bar.

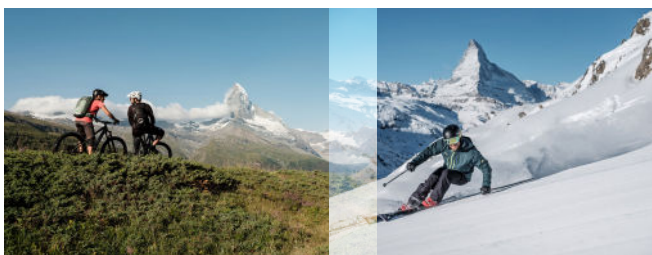
Furthermore there are 7 restaurants and bars of Michel Reybier Hospitality to be experienced in Zermatt in the context of the Wine & Dine concept.



WELLNESS, SPA & SPORT



An inviting pool and wellness area to relax. A heated swimming pool, 2 whirlpools, 2 saunas and 1 steam bath and the Spa Nescens for exclusive better-aging massages, beauty and body treatments complete the offer. Outdoor activities: skiing (winter & summer), heli skiing, snow shoeing, sledging, ice skating, curling, hiking and walking, mountain biking, climbing, excursions to the peaks, paragliding, forest fun park, 9 hole golf course and more....



ZERMATT

The air in the mountains 1616 m / 5'300 ft above sea level is vibrating and the view to the 4478 m / 14'691 ft high Matterhorn loaded with magic. Switzerland's most famous mountain is surrounded by 37 other peaks over 4000 m / 13'100 ft. Zermatt offers over 400 km / 248 mi of hiking trails in summer season and 360 km / 223 mi of ski slopes in winter.



FOR FAMILIES WITH CHILDREN

Children are very welcome at Schweizerhof Zermatt! We will be pleased to provide you with cots, baby monitors, bottle warmers and children's sledges. Family rooms and combinations on request. The Kids Club (only open in winter) promises fun play time for our smallest guests. Family specials are available on the website.

MEET, WHERE OTHERS GO ON VACATION

The Schweizerhof Zermatt features modern meeting and conference facilities for up to 70 persons. For business events, workshops, exhibitions and much more.

CONTACT
events@schweizerhofzermatt.ch

ARRIVING & PARKING

Zermatt is car free. Access for cars is only permitted as far as Täsch (5 km from Zermatt). Arrival by trains, taxi or helicopter. Distance to airport:

- Zurich: 3,5 hours by train / 4 hours by car
- Geneva: 4 hours by train / 3,5 hours by car
- Milano Malpensa: 4 hours by train / 3,5 hours by car

